



**Annual Report
FY2015**

July 1, 2014 - June 30, 2015

CONTENTS

Message from National Director.....	3
Nepal earthquake response.....	4
‘Peace of mind’ - an earthquake-affected family share their story.....	6
Building homes, communities and hope with our partners.....	7
Partnership highlights in FY2015.....	8
In recognition of housing finance support.....	9
Everest Build III.....	11
Women Build 2015.....	12
Global Village Volunteers.....	13
Looking to the future - ‘Build Nepal’ strategy.....	14



MESSAGE FROM NATIONAL DIRECTOR



The devastating earthquakes of April 25 and May 12, 2015, have added an impetus to Habitat for Humanity's work in Nepal. Hundreds of thousands of people have lost their homes and their family members to the quake. Together with our partners, we are committed to help affected families recover and rebuild their lives and homes.

In early May, we mobilized local volunteers to remove rubble and at the end of the month, we distributed the first temporary shelter kits. The aim is to distribute 5,000 temporary shelter kits by the end of August. We have built 21 demonstration temporary shelters to show affected communities how to best use the materials in a temporary shelter kit. Habitat and its partners aim to start construction of permanent homes in August.

HFH Nepal and its partners are continuing to serve families through the regular programs. Throughout the year, training in masonry, and construction of tube wells and toilets is conducted to boost livelihood skills. Other sessions in water, sanitation and hygiene aim to raise awareness and improve the health of families.

With the completion of Everest Build III in Chitwan that has provided shelter to 36 families, we look forward to building more homes and serving more families under our 'Build Nepal' strategy, where HFH Nepal will work very closely with an extensive network of partners.

Our past achievements were only possible with the support and contributions of our partners, donors, volunteers and families. Success depends on the collective effort of many groups working together toward a common goal of a Nepal where everyone has a decent place to live. Thank you for your support.

In partnership,

A handwritten signature in black ink that reads "Desiree M. Bartosiak". The signature is written in a cursive, flowing style.

Desiree Bartosiak
National Director
Habitat for Humanity Nepal

Nepal earthquake response





Habitat volunteers helping to distribute iron rods in Dhading, Sindhupalchowk.

More than 600 Nepali volunteers have helped HFH Nepal with rubble removal following the April 25 and May 12 earthquakes. They worked in badly hit Lalitpur and Kavre districts, often alongside affected members of the community. Local volunteers also helped to distribute more than 2,300 temporary shelter kits in Kavre, Lalitpur, Gorkha, Dhading, and Sindhupalchowk. The temporary shelter kits consist of materials such as corrugated roofing, steel piping, wiring and basic tools. Through the construction of 21 demonstration temporary shelters in Kavre and Sindhupalchowk, Habitat showed the local communities how best to utilize the materials from the temporary shelter kits. In the early stage of Habitat's response to the earthquake, more than 20,000 water backpacks were distributed in Gorkha, Sindhupalchowk, Bhaktapur, Kavre, Dhading, Dolakha, and Ramechaap. Families were taught how to use the water backpacks for fetching and storing water.

HFH Nepal plans to directly build an additional 100 permanent homes in Kavre for families affected by the disaster by end of December 2015 and support thousands more families to build their own homes by providing technical assistance. HFH Nepal will also construct another 45 demonstration permanent homes in different locations in Nepal to train microfinance institutional partners and local communities on using appropriate and affordable materials to build earthquake-resilient houses.

Meanwhile, HFH Japan and HFH Nepal have started the "Building Safety Assessment Project" in partnership with the National Society of Earthquake Technology – Nepal (NSET). This project aims to provide safety assessments of 15,000 houses as well as technical advice to families. It will also involve advocacy among stakeholders on policy and project design that supports the building of disaster-resilient structures in Nepal.



Water backpack distribution in Gorkha

“
**Now I am not worried
that a strong wind
might blow my home
away.**
”



Peace of mind

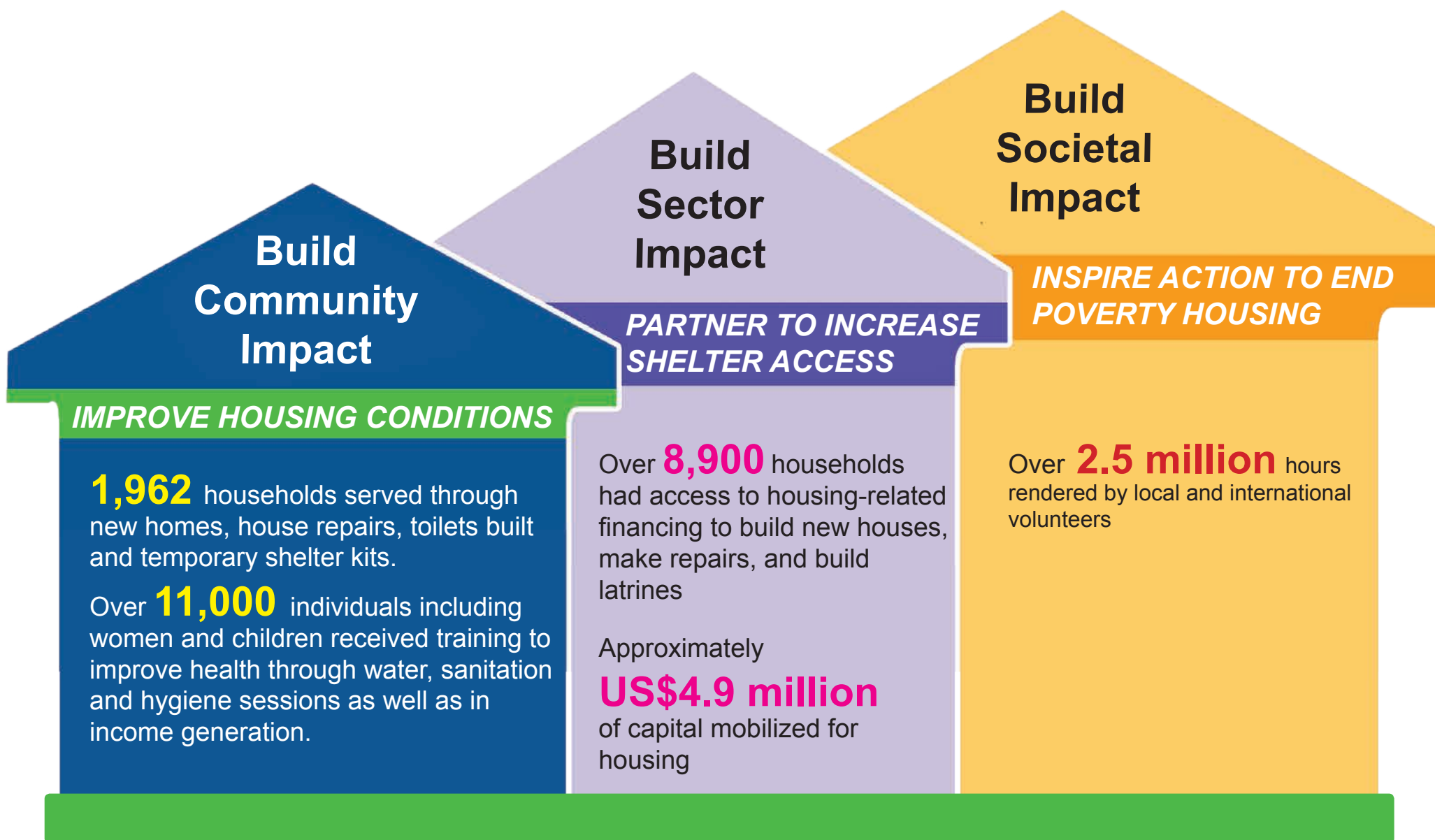
When Sanila Danuwar, 27, first received the temporary shelter built by Habitat for Humanity in late May 2015, it was a simple structure made of corrugated tin sheets, wires and rods. When a Habitat for Humanity team visited Sanila and her family a week later, the shelter had been upgraded with ‘walls’ made of tin sheets and bamboo salvaged from the family’s earthquake-affected house. Inside their shelter, Sanila, her husband and their three-year-old daughter are protected from the rain.

Sanila’s father-in-law had been sleeping out in the open after the April 25 earthquake, and he fell ill following a strong storm which later hit

Pipaltar village, Kavrepalanchok district. A few days after Sanila’s family received the temporary shelter, her father-in-law died in hospital, having been diagnosed with severe pneumonia.

Although she feels sad over the death of her father-in-law, Sanila is thankful for the shelter. Compared to when she was living in a tent, she is able to sleep better now, in a bed with a mosquito net. She has resumed working in the field, harvesting her tomatoes. “Now I am not worried that a strong wind might blow my home away,” she said. Sanila and her family can focus on eventually building a permanent home.

Building homes, communities and hope with our partners



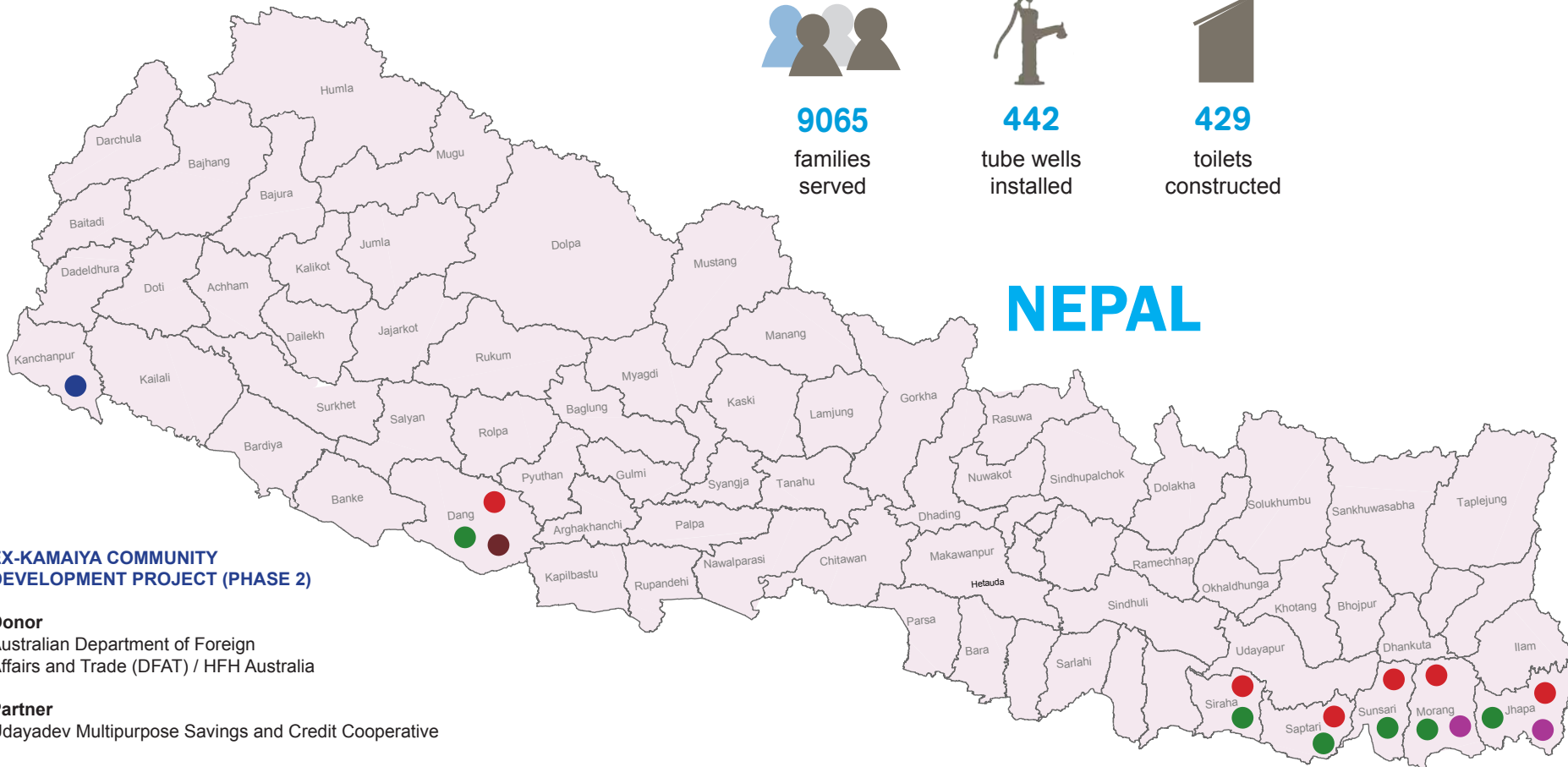
Partnership highlights in FY2015



429

toilets
constructed

NEPAL



**EX-KAMAIYA COMMUNITY
DEVELOPMENT PROJECT (PHASE 2)**

Donor

Australian Department of Foreign
Affairs and Trade (DFAT) / HFH Australia

Partner

Udayadev Multipurpose Savings and Credit Cooperative

STRENGTHENING OF FEMALE-HEADED HOUSEHOLDS (PHASE 2)

Donor

Australian Department of Foreign Affairs
and Trade (DFAT) / HFH Australia

Partners

Bibekshil Mahila Krishi Sahakari Sanstha
Nari Chetana Krishi Sahakari Sanstha
Jeevan Bikas Samaj
Forum for Rural Women Ardeny Development (FORWARD)
SOS Children's Village
Mahuli Community Development Center
Srijana Community Development Center

IMPROVED LIVING CONDITIONS THROUGH ACTIVE COMMUNITY PARTICIPATION

Donor

Korean International Cooperation
Agency (KOICA) / HFH Korea

Partners

Mahuli Community Development Center
Srijana Community Development Center
Sahara Nepal
FORWARD
Jeevan Bikas Samaj
Rural Women Development Center

- **PROMOTION OF BAMBOO CULTIVATION FOR SUSTAINABLE CONSTRUCTION**

Donor

HFH Netherlands

Partners

Aviyan Nepal
Sahara Nepal
Jeevan Bikas Samaj
Nepal Women Community Service Center
Rural Women Development Center
Social Upgrade in Progress of Educational Region
(SUPER)

● GHORAHİ COMMUNITY DEVELOPMENT PROJECT

Donor

The Charitable Fund / HFH Australia

Partner

Rural Women Development Center

In recognition

In the 18 years that Habitat for Humanity has been working in Nepal, support from its partners in providing housing finance is a key factor in ensuring that low-income families can gain access to decent shelter. We continue to work with various microfinance institutions, cooperatives, and lending and savings groups in reaching out to more Nepali families. Through small loans from our partners, families have the means to build better houses, repair or improve their homes and construct latrines. In the financial year from July 1, 2014, to June 30, 2015, Habitat and its partners have served more than 8,900 households with housing-related financial services. Approximately US\$4.9 million of capital was also mobilized by our partners.



Partner	Number of households served through financial services	Amount of capital mobilized (US\$)
Jeevan Bikas Samaj	2621	120,126,000.00
Rural Women Development Centre	960	49,428,500.00
Nawa Prativa Saving and Credit Cooperative	738	39,319,000.00
Kisan Multipurpose Cooperative	680	106,848,000.00
Udayadev Bhahudesya Sahakari Sanstha	654	29,930,000.00
Forum For Rural Women Ardency Development (FORWARD)	570	28,655,000.00
Mahila Upakar Manch	429	12,633,000.00
Nepal Women Community Service Centre (NWCSC)	398	19,950,000.00
Kanchanpur District Saving and Credit Union	374	29,426,328.00
Srijana Community Development Center, Siraha	256	12,707,000.00
Doti District Saving and Credit	244	2,551,300.00
Bajhang District Saving and Credit	184	177,160.00
Mahuli Community Development Center, Mahuli	180	7,639,000.00

Sri Jharana Bachat Tatha Rin Sahakari Sanstha	151	4,301,000.00
Baitadi District Saving and Credit Union	97	150,000.00
Udayam Bikas Saving and Credit Cooperative	67	8,925,000.00
National Educational and Social Development Organisation (NESDO)	61	2,775,000.00
Amardeep Mahila Utthan Bacchat Tatha Rin Sahakari Sanstha	56	7,461,000.00
Social Upgrade in Progress of Educational Region (SUPER)	50	1,363,000.00
SOS Children's Village	34	1,670,000.00
Nepal Gramin Bikash Bank	31	5,920,000.00
Aviyan Nepal Multi Cooperative	25	505,000.00
Sri Gramin Mahila Bikash Bahuudesya Sahakari Sanstha	20	916,410.00
Nari Chetana Mahila Krishi Sahakari Sanstha	20	540,000.00
Shreejana Development Centre	13	600,000.00
Bibekshil Mahila Krishi Sahakari Sanstha	10	405,500.00
TOTAL	8,923	494,922,198

Everest Build III

The third Everest Build was held in the district of Chitwan, also known as “Heart of the Jungle”. The special build from November 17 to 21, 2014, in Ratnanagar municipality saw 373 international volunteers building bamboo homes alongside 36 families. They were joined by more than 100 local volunteers from Nepal Scouts and Nepal Academy of Tourism and Hotel Management.

The international volunteers came from Australia, Cambodia, Hong Kong, Ireland, New Zealand, the Philippines, Singapore, the United Kingdom and the United States.





Women Build 2015

On April 8, 2015, about 20 influential women met in Kathmandu to discuss about organizing a Women Build as a curtain raiser to the Jimmy & Rosalynn Carter Work Project which would be held in Nepal in November. Participants included business women, social activists, bankers and politicians seeking to raise awareness about housing issues in the country.



Global Village Volunteers

Volunteer builders from overseas play a vital role in Habitat for Humanity Nepal's mission of building homes, communities and hope. Their contributions of labor, time and talent help to create a life-transforming experience for local families and communities.

In the financial year ended June 30, Habitat for Humanity Nepal hosted 25 Global Village teams involving a total of 438 volunteers. The international volunteers came from Korea, Australia, Switzerland, Hong

Kong, the United Arab Emirates, Spain, the Netherlands, Japan, Canada, Australia, the United States and Singapore. Volunteers had built a total of 34 houses in Pokhara, Chitwan, Kavre, Nawalparasi, Sunsari, Jhapa, and Morang.

While we continue to help earthquake-affected families, we look to our GV volunteers for their steadfast support for our regular work of building homes and hope.

Looking to the future

'Build Nepal' is Habitat for Humanity's long-term strategy for Nepal, including its operational focus and targets for the next few years. It encapsulates Habitat for Humanity's regular program activities, disaster response operations, the 32nd Jimmy & Rosalynn Carter Work Project, and other special activities.

About 22 people attended the first meeting on 'Build Nepal' which was held at Habitat for Humanity Nepal's office on June 26. Chaired by Rick Hathaway, Habitat for Humanity's Vice President for Asia Pacific, the meeting gathered stakeholders such as the government, partners, HFH Nepal's Youth Ambassadors, and influential women leaders.

Hathaway highlighted the urgent need for shelter for earthquake-affected families as well as the vision of every Nepali having a decent place to live. Updates on HFH Nepal's earthquake response were shared and participants discovered innovative ways in which they could work in partnership with Habitat.





GPO Box 24037, Dhumbarahi, Kathmandu

Phone : (+977) (1) 4432801, 4432582

Fax : (+977) (1) 4432949

Email : info@habitatnepal.org

Website: www.habitatnepal.org

Facebook: www.facebook.com/HabitatForHumanityInternationalNepal