



Habitat
for Humanity®
Nepal

every one

deserves a decent
place to live

Annual Report FY2017
July 1, 2016 – June 30, 2017



contents

message from the national director	3
Chhana program	4
87 earthquake-affected families complete rebuilding homes in Pipaltar	5
Nepal earthquake response	6
achievements	7
volunteer program	8
equitable access to land can end vulnerabilities	9
Habitat Young Leaders Build	10
improving sustainability and efficiency-housing design	11
web-based project management system	12
financial statement	13

message from the national director

Dear Friends of Habitat Nepal,

2017 was a great a year, rich with challenges testing our capacities and hard-won successes keeping us motivated. When we launched our new 5-year country strategy Chhana: Safe Shelter- Resilient Communities program we weren't sure how implementation would unfold. A year later, the approach is working in three distinct communities demonstrating that the model is replicable. We were able to support 273 earthquake-affected families to rebuild their homes and provide technical assistance to an additional 3175 families.

Also this year, Habitat Nepal launched an emergency response immediately following massive monsoon flooding in the southern plains that destroyed 1,000s of homes and took more than 100 lives. Drawing upon experience gained mounting a relief operation after the earthquakes in 2015, the team was well prepared to provide emergency support to flood- affected families.

Reflecting on 2017, several high points stand out. In partnership with Nepal Scouts, Habitat Nepal organized a two-day build in which 148 young scouts from 10 countries and their leaders worked to assist families who had lost their homes during the earthquake.

Habitat Nepal launched a GIS supported MEAL system this year. This e-system enables swift, simple data collection and management, allowing for real time reporting and data based decision-making that helps increase the efficiency and effectiveness of our projects.

HYLB Leadership Training was another highlight of 2017. With the objective to garner massive youth support for the cause of decent shelter and stronger communities, Habitat will be providing leadership training to 10,000 Nepali youth by the end of FY2018.

Habitat Nepal's work in advocacy also made strides this year and with new funding is participating in Habitat For Humanity's Solid Ground

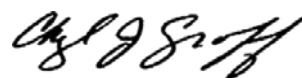
campaign. This global advocacy campaign seeks to promote secure land tenure, gender equality in property ownership, disaster resilience and better living conditions for slum dwellers.

As we step into a new year, Habitat Nepal prepares to welcome a new National Director, Christy Stickney. Christy is not new to HFHI and with her expertise in micro-finance will help launch a new undertaking 'Nepal Vision 2022'. This initiative will be piloted in the eastern region and is designed to get more low-income families into decent homes through access to housing finance.

2017 was a great a year made possible through the engagement of our home partners, local communities, NGO partners and the support of the Nepal government and its various agencies – the Social Welfare Council, National Reconstruction Authority and Ministry of Youth and Sports.

Of course, none of the achievements of Habitat Nepal are possible without the generous support of our donors and volunteers from around the world. Working with Habitat Nepal has been a great experience and as I complete this assignment I want to thank each and every one of you for your contributions and support throughout the past two years. I know you will continue to support the work of Habitat Nepal in 2018 and beyond.

Best wishes to all in the New Year!



Cheryl Groff
National Director
Habitat for Humanity Nepal

Chhana Program

On 5 January 2017, Habitat for Humanity Nepal made inroads following the devastating 2015 earthquakes with the launch of a new five-year program that was approved by the Government of Nepal. The Chhana: Safe Shelter-Resilient Communities Program took its name from the Nepali word “chhana” which means roof and implies shelter or protection.

Based on our new integrated approach, program activities fall under four pillars: social mobilization; technical assistance; tiered financial assistance; and market development. This approach enables Habitat Nepal and our partners to provide a wide array of services to enable low-income families to gain access to safe and affordable housing.



Social Mobilization

- Project Briefing
- Enrollment
- Participatory Approach for Safe Shelter Awareness (PASSA)
- Housing Recovery and Reconstruction
- Mapping (HRRM/GIS)



Technical Assistance

- TOT for Masonry Training for Engineers
- Masonry Training for Skilled Mason
- Masonry Training for Unskilled Mason
- Housing Support Service Centre (HSSC)



Tiered Assistance

- Grant Disbursement
- GIK Support (as building Material)
- Skilled Labor Support for Vulnerable Households
- GIK Support (for repair and retrofit)



Market Actors

- Housing Market Supply Chain
- Vocational Training
- Construction Related Enterprise Development
- Construction Equipment Library



87 earthquake-affected families complete rebuilding homes in Pipaltar

“My family was involved in rebuilding this house and helped with everything from the foundation to the roof. I am blessed to have a new home.” - Suntali

Pipaltar was one of the worst-hit villages in Kavrepalanchowk district following major earthquakes that struck on April 25 and May 12 in 2015. Only two houses were not completely destroyed in the 89-household community. Together with the members of the community, Habitat volunteers helped to clear rubble in the emergency response phase.

In August 2015, Habitat Nepal constructed the first disaster-resilient demonstration house made of brick, bamboo and cement as part of a recovery plan to rebuild all 87 destroyed houses. Under an owner-driven approach, families were actively involved through masonry skills training and contributing their own labor, or “sweat equity”, in rebuilding their homes and those of others in the community.

Families also built toilets adjoining their new houses and received training in water, sanitation and hygiene and waste management.



Nepal earthquake response

Soon after the earthquakes hit Nepal in 2015, Habitat's priority was to help families in two of the most affected districts – Kavrepalanchok and Nuwakot – rebuild their lives and homes. In November 2016, Habitat Nepal received the government's approval to expand its work in two more wards of Tupche in Nuwakot. Playing a key role in Habitat Nepal's response to the earthquake are the groups that had been trained in Participatory Approach for Safe Shelter Awareness. Members of the PASSA groups support Habitat Nepal's earthquake response in encouraging affected families to apply for government grants, identifying those who are particularly vulnerable for additional grant, gift-in-kind and labor support. The PASSA group members who have undergone masonry training help monitor the house construction progress in the community and ensure timely completion.





achievements

(June 2016 – June 2017)



2,714

households enrolled for government grant



376

households received technical supervision support



219

tiered assistance



52

unskilled masons trained



273

families served



146

skilled masons trained



16

PASSA group formed



3

vocational training

volunteer program

As part of the Global Village program, international volunteers work hand-in-hand with families in Habitat for Humanity Nepal's efforts to build decent, affordable homes.

For the fiscal year ended June 30, 2017, a total of 448 international volunteers from 16 GV teams built homes, communities and hope in the eastern and central regions of Nepal. Volunteers also worked alongside families in disaster recovery to rebuild homes and lives with locally based corporate teams showing strong support. Those teams included Standard Chartered Bank, Kemin Industries, Metlife, BP and Yeti Airlines that contributed to reconstruction efforts following the 2015 earthquakes. In addition, Christian Aid Ministries sent 163 volunteers over 5 months to the earthquake-hit Tupche community in Nuwakot district.

FY 2017

 **27**
Number of Teams

 **448**
Number of Volunteers

 **169**
Number of Build Days

 **15,646.5**
Volunteer Hours



equitable access to land can end vulnerabilities

At an April 2017 panel discussion, Sapana Pradhan Malla, a judge of the Supreme Court of Nepal, emphasized that some laws needed to be changed to protect women against being forced to sell land or property that has come under their name. The discussion was held as part of Solid Ground, Habitat for Humanity's global advocacy campaign. Through Solid Ground, Habitat aims to bring stakeholders to find solutions to address access to land through four key areas: secure tenure, slum upgrading, disaster resilience and gender equality, according to Habitat Nepal's National Director Cheryl Groff. Another panelist, Govind Raj Pokharel, the CEO of the National Reconstruction Authority, saw opportunities for social and economic transformation in a post-disaster environment.



Habitat Young Leaders Build

In December, Habitat Nepal launched its annual youth-focused campaign, Habitat Young Leaders Build simultaneously in three districts: Panchkhaal-Kavrepalanchok, Sunsari and Dang. The event drew more than 500 enthusiastic volunteers and supporters from all walks of life.

Habitat Nepal, in partnership with Leadership Academy, conducted four one-day sessions on “Empowering youth to be agents of change in their communities.” Over 200 students from different colleges received the leadership training.

Volunteers were trained and sent to schools and colleges to disseminate objective of Sustainable Development Goal 11. Over 4,500 young people were reached through this initiative.

In the East, Habitat and its partners – Sahara Nepal, Jeevan Bikas, Mahuli Samudayik Bittiya Sanstha, SOS Balgram and other local agencies – collaborated with more than 20 youth clubs to encourage young people to advocate for decent housing. Other activities included planting of trees, home construction, neighborhood clean ups, and water, sanitation and hygiene training.



Volunteers Mobilized	Participants	social media outreach	online & radio media outreach
20823	184596	5504	3292500



CONSTRUCTION MATERIAL AND MANPOWER

LEVEL	SMB-1		STONE & BAMBOO								
	MANPOWER		MATERIALS								
	Skilled Labour	Unskilled Labour	Cement	Sand	Aggregate	Stone	wood	CGI Sheet	Bamboo	Reinforcement	
Up to Plinth	36	131	77	9	3	30	0.043	-	-	-	289
Super Structure	78	170	63	7	3	15	0.221	5.43	96	-	385
Finishing work	13	15	6	1	-	-	-	-	-	-	-
Total	126	316	146	18	6	45	0.264	5.43	96	-	675

	TYPE OF HOUSE:	MODEL SMB - 1	SCALE:	NOT TO SCALE	DATE:	JUNE 2016	SMB - 1
	DRAWING TITLE:	PERSPECTIVE AND ESTIMATION	DESIGNED BY:	HABITAT FOR HUMANITY			1

improving sustainability and efficiency-housing design

A single-story stone-and-bamboo house design by Habitat Nepal has received the greenlight from the Nepali government in Feb 2017. With the approval from the Department of Urban Development & Building Construction, Habitat Nepal is looking to work with more earthquake-affected families to build permanent homes in Kavrepalanchok and Nuwakot districts. Engineers and architects from Habitat Nepal's technical department have been working to design homes that are not only disaster-resilient but also cost less due to the use of locally available, environmentally friendly construction materials.



FRONT ELEVATION

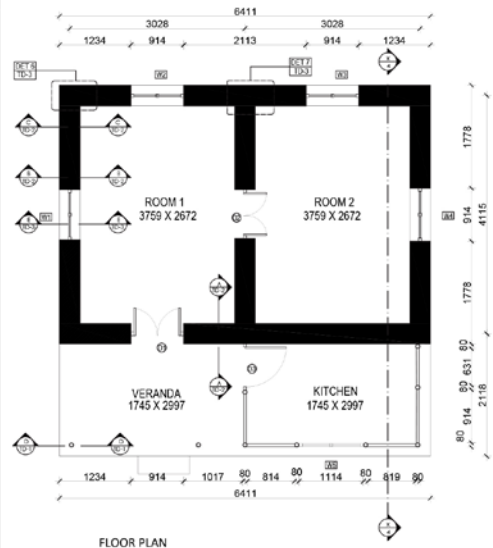
SIDE ELEVATION 1



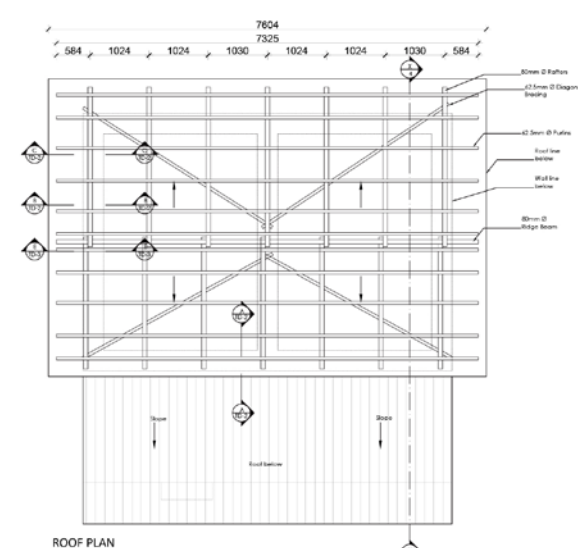
SIDE ELEVATION 2

BACK ELEVATION

	TYPE OF HOUSE:	MODEL SMB - 1	SCALE:	NOT TO SCALE	DATE:	JUNE 2016	SMB - 1
	DRAWING TITLE:	ELEVATION	DESIGNED BY:	HABITAT FOR HUMANITY			3



FLOOR PLAN



ROOF PLAN

	TYPE OF HOUSE:	MODEL SMB - 1	SCALE:	1:48	DATE:	JUNE 2016	SMB - 1
	DRAWING TITLE:	PLAN	DESIGNED BY:	HABITAT FOR HUMANITY			2

web-based project management system

Habitat Nepal has built an innovative web-based management system to track progress of projects in real time. The GIS-mobile app-web-based system not only collects data and information from the field through a mobile application but it can also process and manage real-time data to create visual tools that can be easily analyzed and used to guide program activities.

A pilot project using this system is underway in Nuwakot and Kavrepalanchowk, the areas where the Nepal Earthquake Assistance Program is implemented. Habitat Nepal plans to promote this system in other geographical areas in the future.



IEC to raise awareness

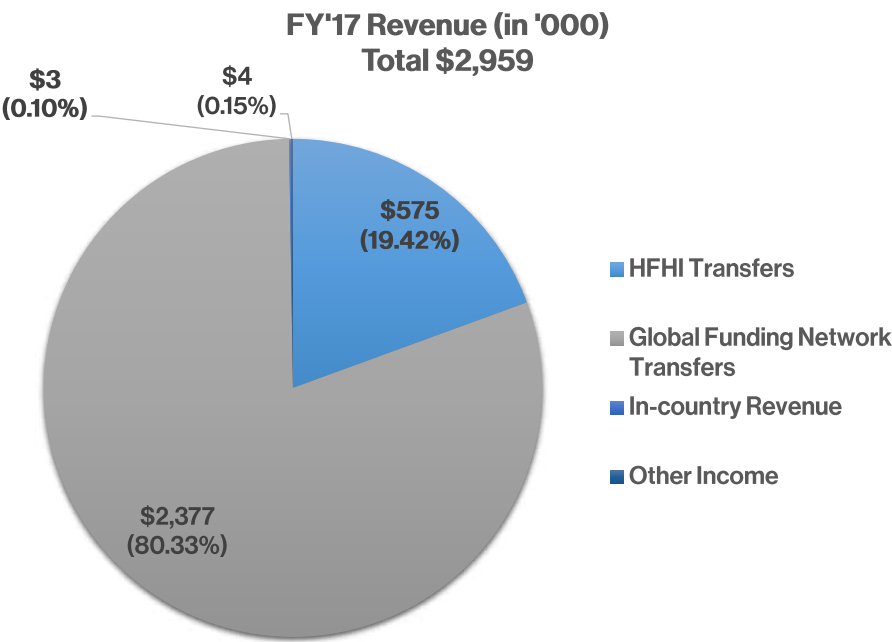
Five different hazard related IEC materials were developed to raise public awareness. The IEC materials address the prevention and preparedness related to natural disaster-fire, flood, earthquake, heath wave and cold wave.



financial statement

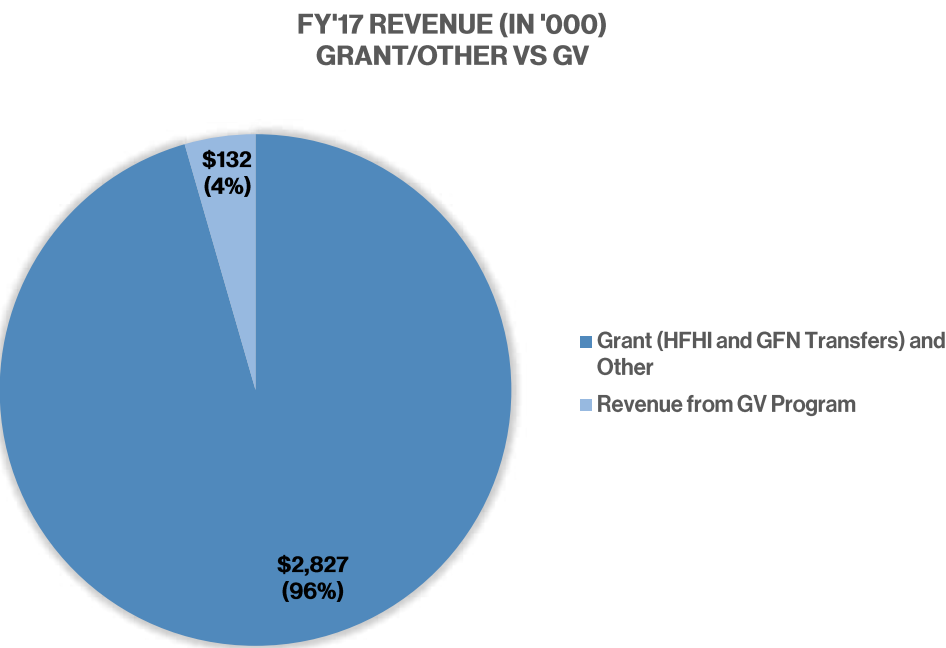
FY'17 Revenue (in '000)

Category	\$	%
HFHI Transfers	\$575	19.42%
Global Funding Network Transfers	\$2,377	80.33%
In-country Revenue (Net)	\$3	0.10%
Other Income	\$4	0.15%
Total Revenue	\$2,959	100.00%



FY'17 Revenue (in '000)

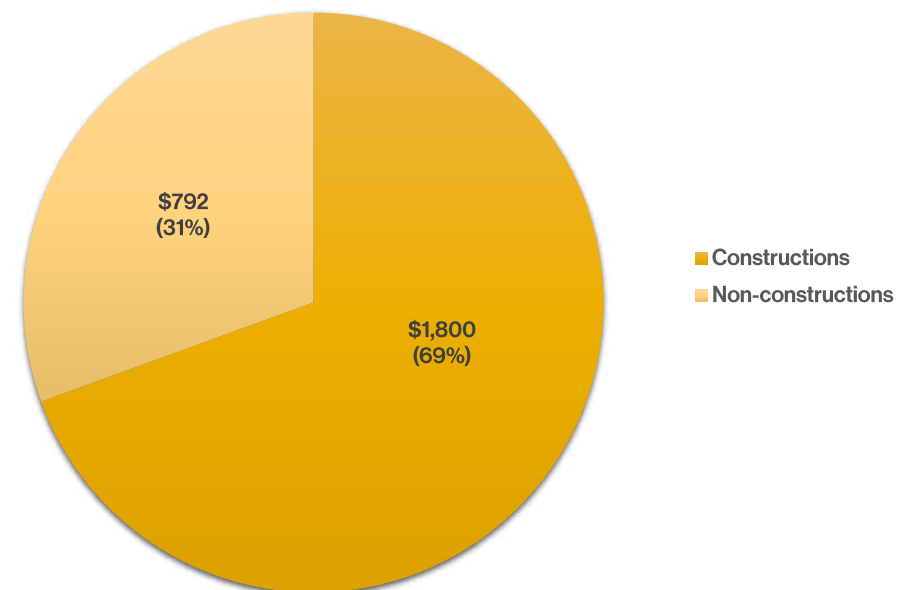
Category	\$	%
Grant (HFHI and GFN Transfers) and Other	\$2,827	96%
Revenue from GV Program	\$132	4%
Total Revenue	\$2,959	100.00%



FY'17 Expenditure (in '000)

Category	\$	%
Constructions	\$1,800	69%
Non-constructions	\$792	31%
Total Revenue	\$2,959	100.00%

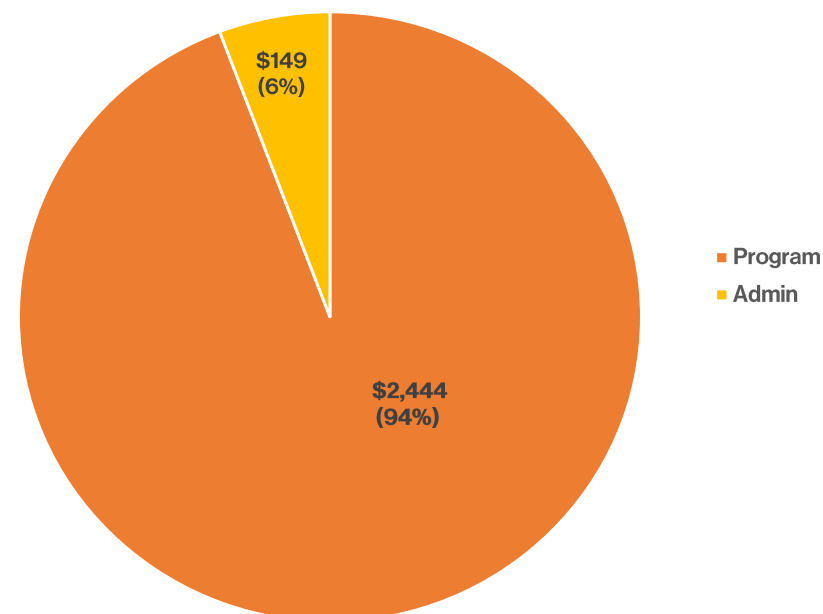
FY'17 Expenditure (in '000)
Constructions Vs Non-Constructions



FY'17 Expenditure (in '000)

Category	\$	%
Program	\$2,444	94%
Admin	\$149	6%
Total Revenue	\$2,959	100.00%

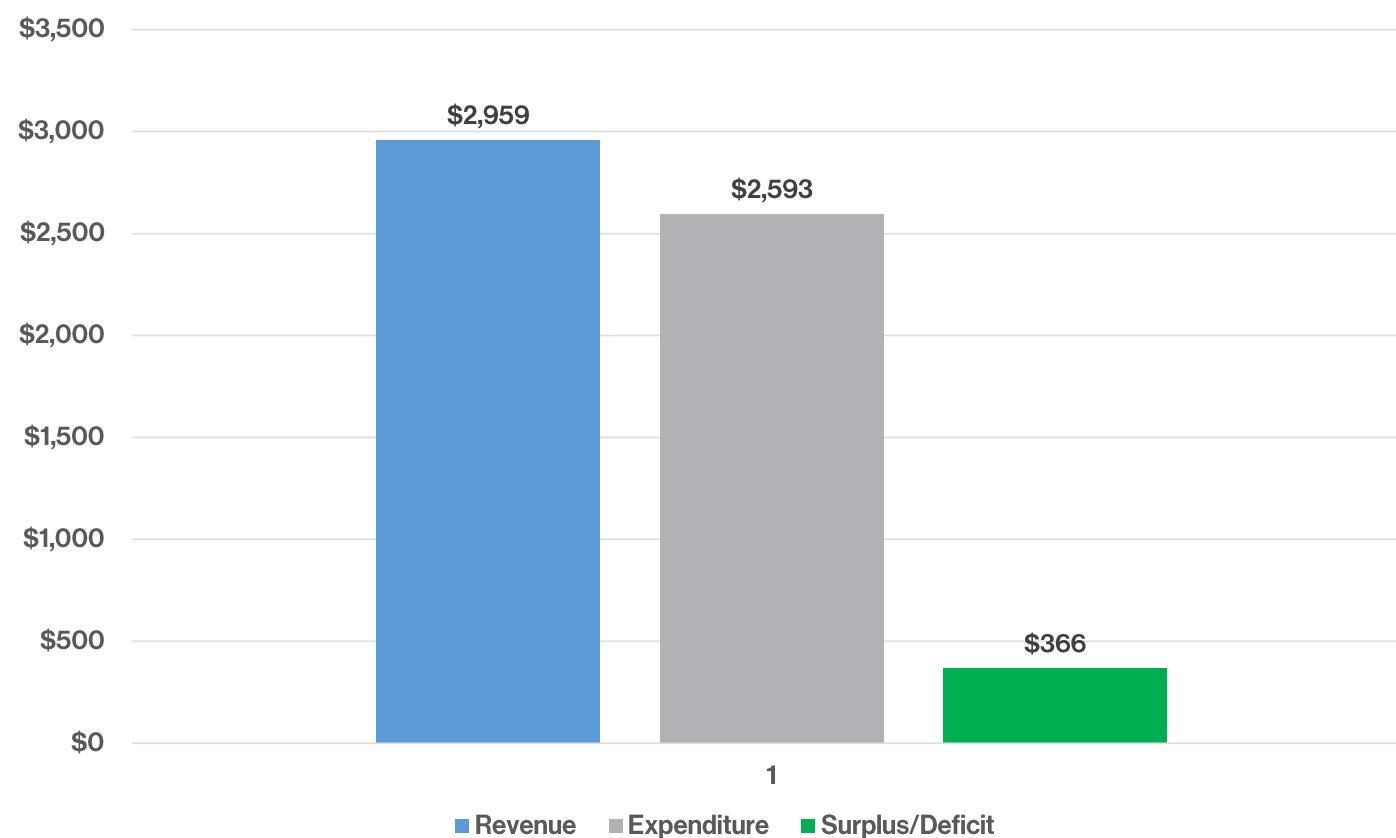
FY'17 Expenditure (in '000)
Admin Vs Program



FY'17 Revenue Vs Expenditure (in '000)

Category	\$	%
Revenue	\$2,959	
Expenditure	\$2,593	
Surplus/Deficit	\$366	12.37%

FY'17 Revenue Vs Expenditure (in '000)





Sanepa Chowk, Lalitpur - 2
P.O.Box: 24037, Kathmandu, Nepal
Phone: +977 1 5521182, 5554976
Fax: +977 1 5520778

Email : info@habitatnepal.org

Website : www.habitatnepal.org

Facebook: www.facebook.com/HabitatForHumanityInternationalNepal